

THE LINE SHOWN ABOVE IS
A FACILITY OVERHANGING THE
THIRTEENTH STREET SIDEWALK

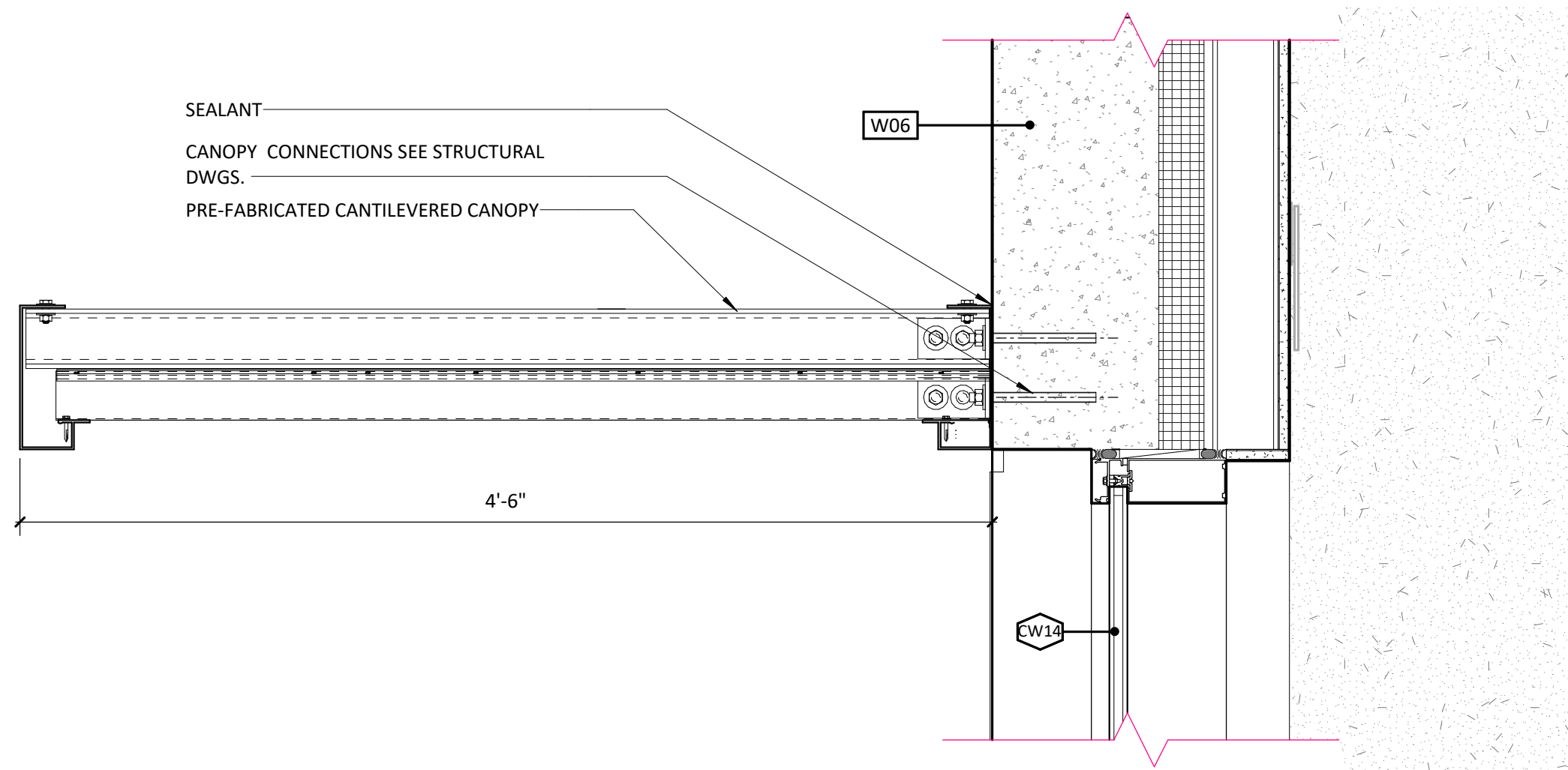
E

D

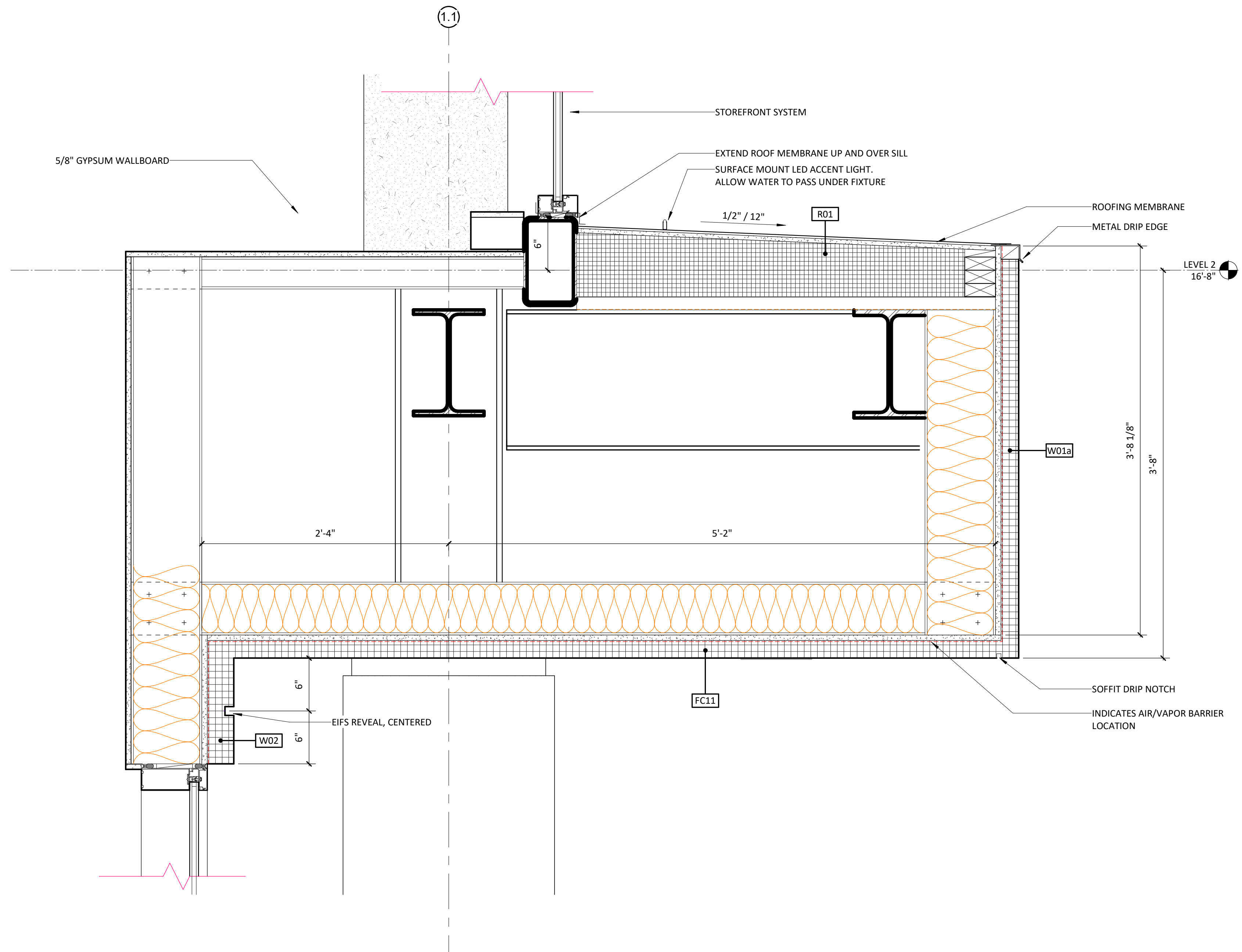
C

B

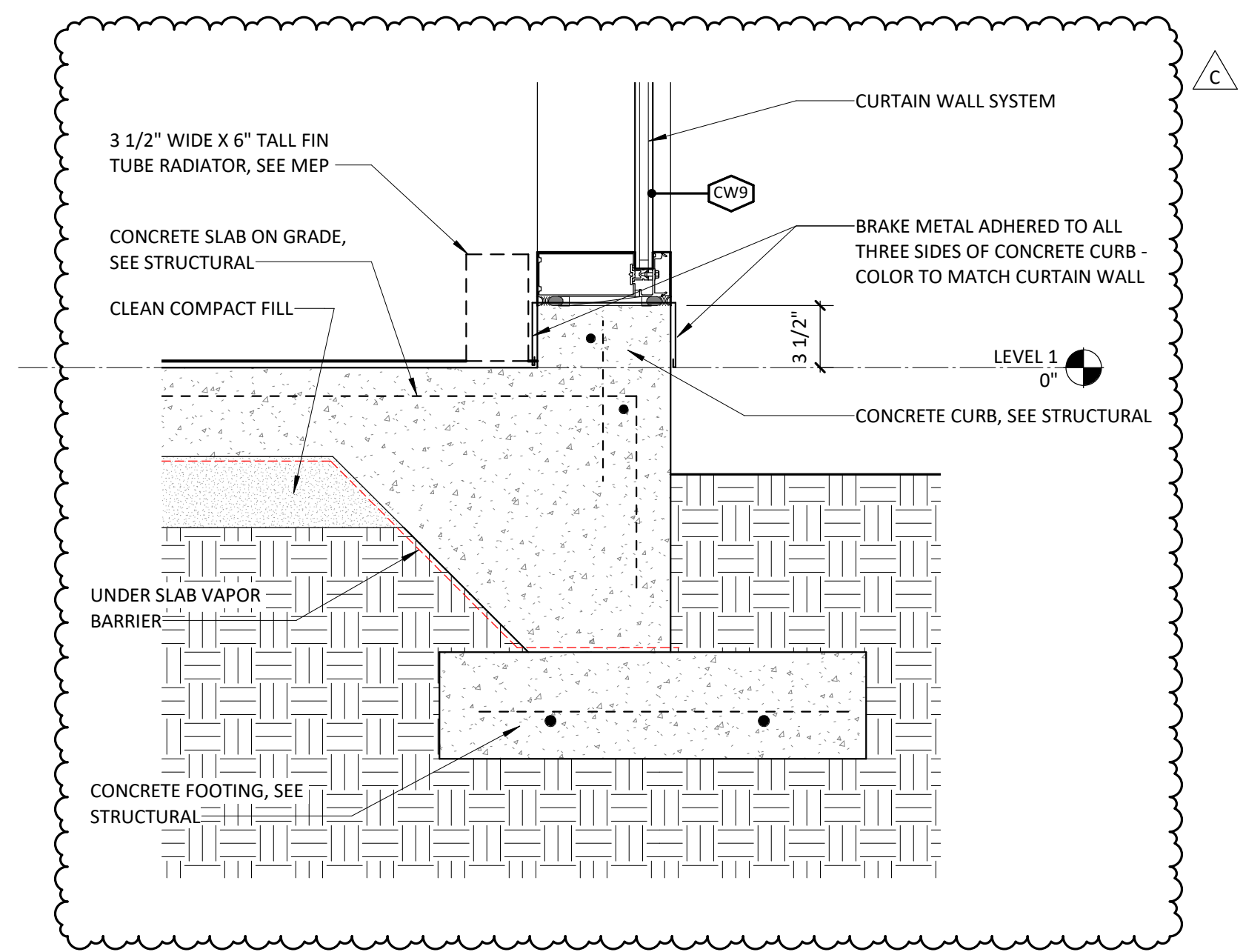
A



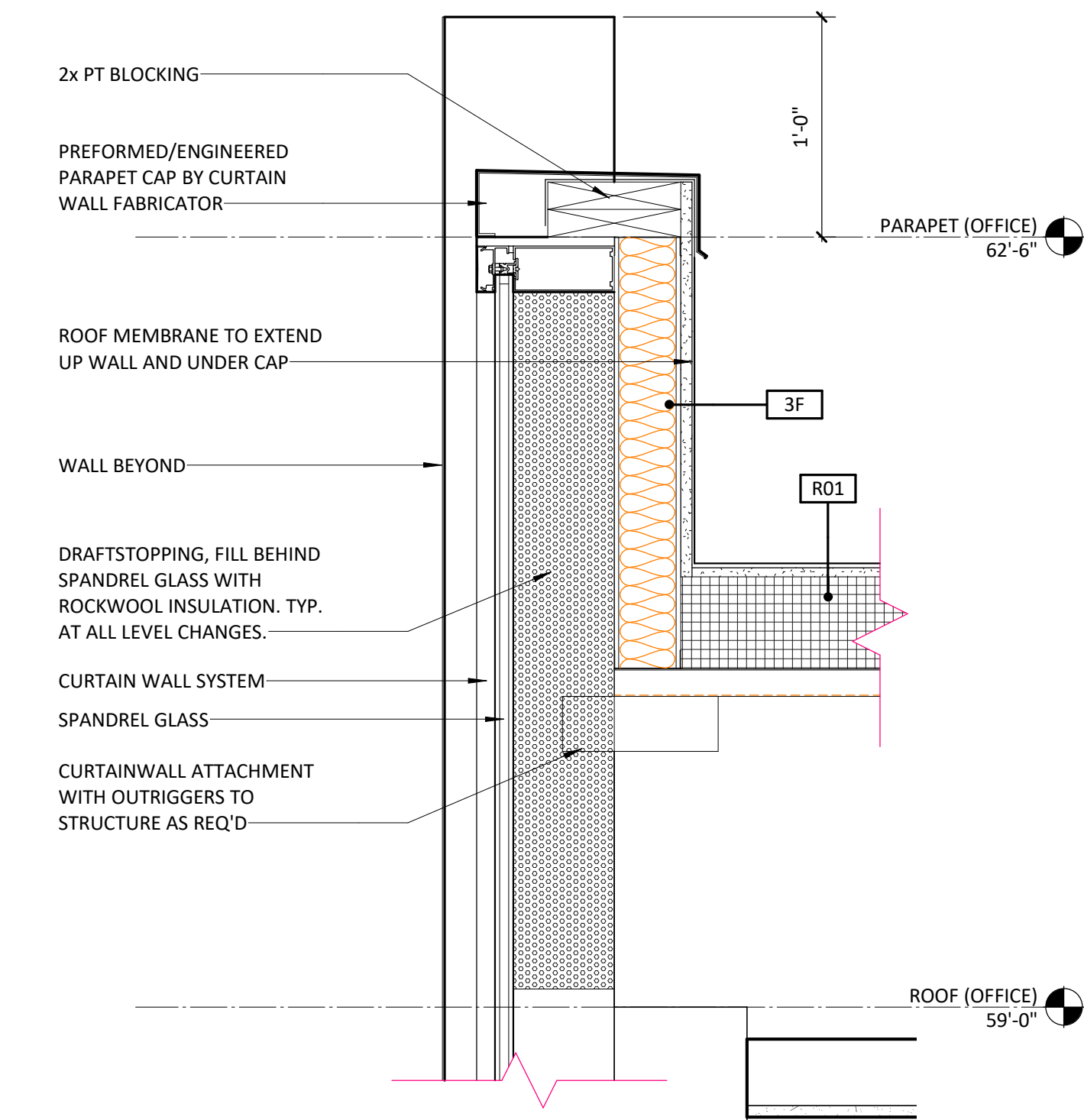
C1	SECTION DETAIL - PRE-FABRICATED CANOPY @ STOREFRONT HEAD	1 1/2" = 1'-0"
A-514		



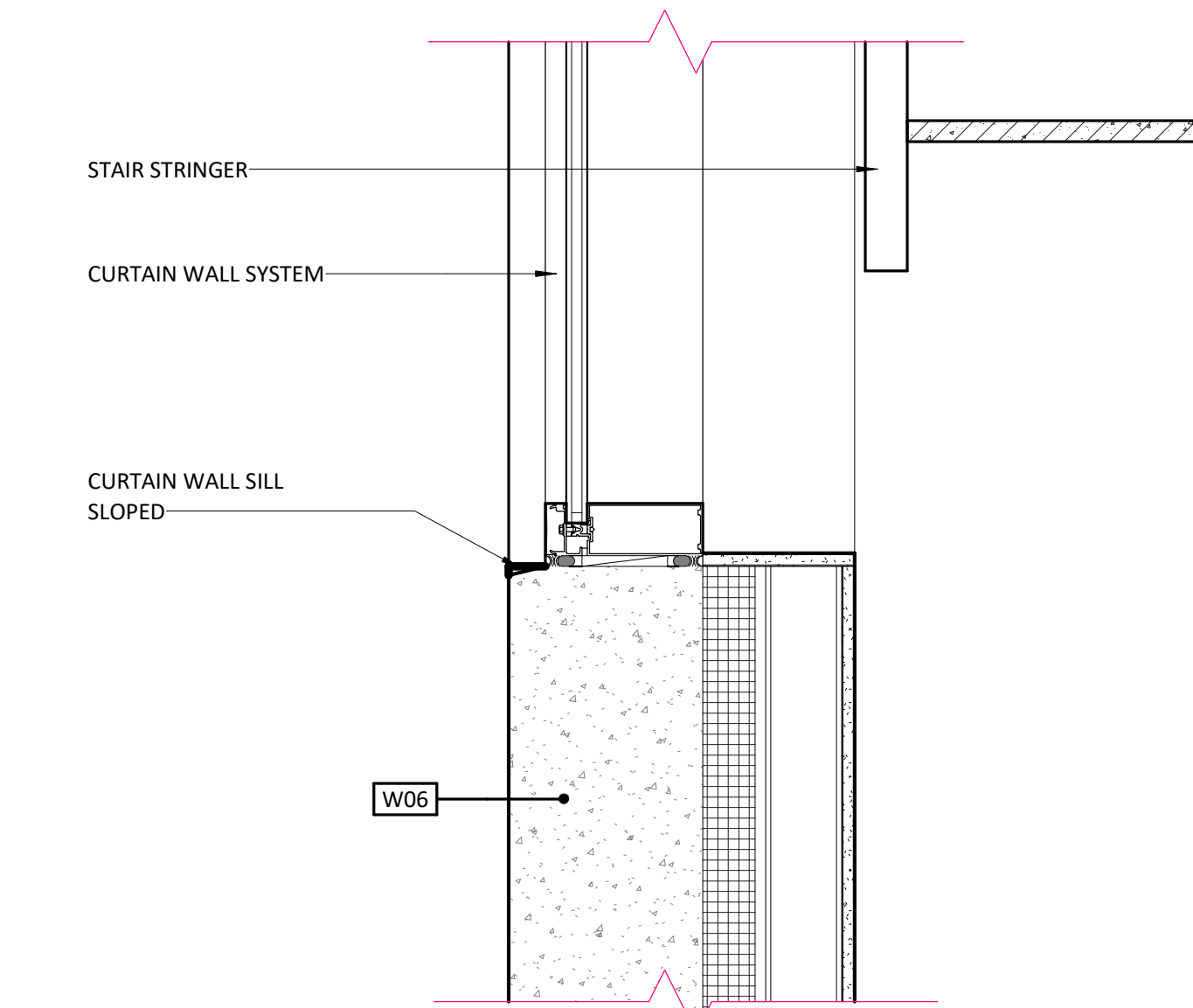
A1	SECTION DETAIL - OFFICE BUMPOUT - LOWER	1 1/2" = 1'-0"
A-514		



D5	SECTION DETAIL - CURTAIN WALL SILL @ CURB	1 1/2" = 1'-0"
A-514		



B5	SECTION DETAIL - CURTAIN WALL HEAD @ PARAPET	1 1/2" = 1'-0"
A-514		



A5	SECTION DETAIL - CURTAIN WALL SILL @ TILT-UP	1 1/2" = 1'-0"
A-514		



CAPE FEAR FD STONEWATER



101 NORTH THIRD STREET, SUITE 500
WILMINGTON, NORTH CAROLINA 28401
TEL. 910.790.9901 FAX. 910.790.3111
WWW.LS3P.COM



NOT FOR
CONSTRUCTION

NHC Government Center 7702-190810

**NEW HANOVER COUNTY
GOVERNMENT CENTER**
GOVERNMENT CENTER DRIVE
WILMINGTON, NC 28403
LS3P PROJECT: 7702-190810

A	DATE	DESCRIPTION
A	2020.10.16	C-5 PERMIT SET
B	2020.12.16	GMP SET
C	2020.12.22	ADDENDUM #1

SHEET NAME:
SECTION DETAILS -
LOWER OFFICE &
CURTAIN WALL

ORIG SUBMISSION: 2020.12.16
CURRENT: 2020.12.22
ADDENDUM #1

SHEET:

A-514

GMP SET

12/22/2020 2:30:14 PM